

**Firestone**  
since 1926 **COMPLETE AUTO CARE™**

**1 Day  
Only!**

# Chamber of Commerce Sale!

**Sunday, November 15th, 2009**

## FACTORY DIRECT PRICING!

**on all Firestone & BRIDGESTONE tires!**

**For all kinds of cars and SUVs!**

See store for complete details. Not to be combined with any other offer or discount. • Offer good Sunday, November 15th.

**Mounting, Balancing, Valve Stem  
and Road Hazard Protection**

**\$12.99**

On passenger tires up to 17" rim dia.  
**\$15.99 on passenger tires with 18"+ rim dia.  
and ALL light truck tires**

See store for complete details. Not to be combined with any other offer or discount.  
Offer good Sunday, November 15th.

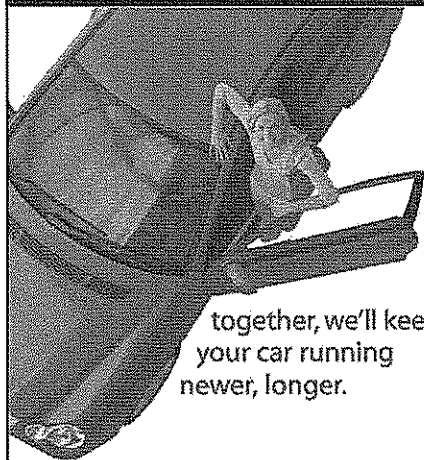
**Lifetime Alignment**

**\$119.99**

- Align all 4 wheels to manufacturer's specifications
- Inspect steering/ suspension systems
- Road test vehicle

See store for complete details. Not to be combined with any other offer or discount.  
Offer good Sunday, November 15th.

### DON'T MISS OUT ON THE BIGGEST TIRE SAVINGS EVENT OF THE YEAR



together, we'll keep  
your car running  
newer, longer.



**NO INTEREST IF PAID IN FULL WITHIN 3 MONTHS†**  
Interest will be charged to your account from the purchase date if the purchase balance is not paid  
in full within 3 months or if you make late payments. Minimum monthly payments required.

**call toll-free: 1-800-LOCATE-US / [www.FirestoneCompleteAutoCare.com](http://www.FirestoneCompleteAutoCare.com)**

Shop supply charges in the amount of 6% of labor charges will be added to invoices greater than \$30. These charges will not exceed \$25 and represent costs and profits. Shop supply charges not applicable in CA or NY. Non-mandated disposal or recycling charges, if any are disclosed above, may also represent costs and profits. Specific product offerings and tread designs may vary. Prices, warranties, car service, credit plans and other offers available at Firestone Complete Auto Care; see affiliated dealers listed for their competitive offers and warranties. †If you do not achieve guaranteed mileage, your Firestone retailer will replace your tires on a pro-rated basis. Actual tread life may vary. All warranties apply only to original owner on originally installed vehicle. See retailer for details, restrictions and copy of each limited warranty.

MINIMUM MONTHLY PAYMENTS REQUIRED. APR: 22.8%. Minimum finance charge: \$1.00. CFNA reserves the right to change APR, fees and other terms unilaterally. V1009